

**A PRELIMINARY EXPOSITION
OF FABRICS IN THE PARP-PS
POTTERY ASSEMBLAGE
(JULY 9, 2010)**

***J. THEODORE PEÑA
DEPARTMENT OF CLASSICS
UNIVERSITY OF CALIFORNIA, BERKELEY***

INTRODUCTORY NOTES

- THE FOLLOWING IMAGES ARE PHOTOMICROGRAPHS OF THE UNTREATED FRACTURE SURFACES OF CHIPS TAKEN WITH A DINO-LITE DIGITAL MICROSCOPE AT A MAGNIFICATION OF 50X
- THE CLASSIFICATION IS BASED ON A VERY BRIEF (CA. 4-HOUR) SESSION WITH MATERIALS FROM THE 2008 SEASON, AND SHOULD BE REGARDED AS A PRELIMINARY WORKING TOOL TO BE CORRECTED, EXPANDED, AND DEVELOPED IN GREATER DETAIL.
- SEE ACCOMPANYING TEXT DOCUMENT FOR ADDITIONAL INFORMATION.

CAMPANA A

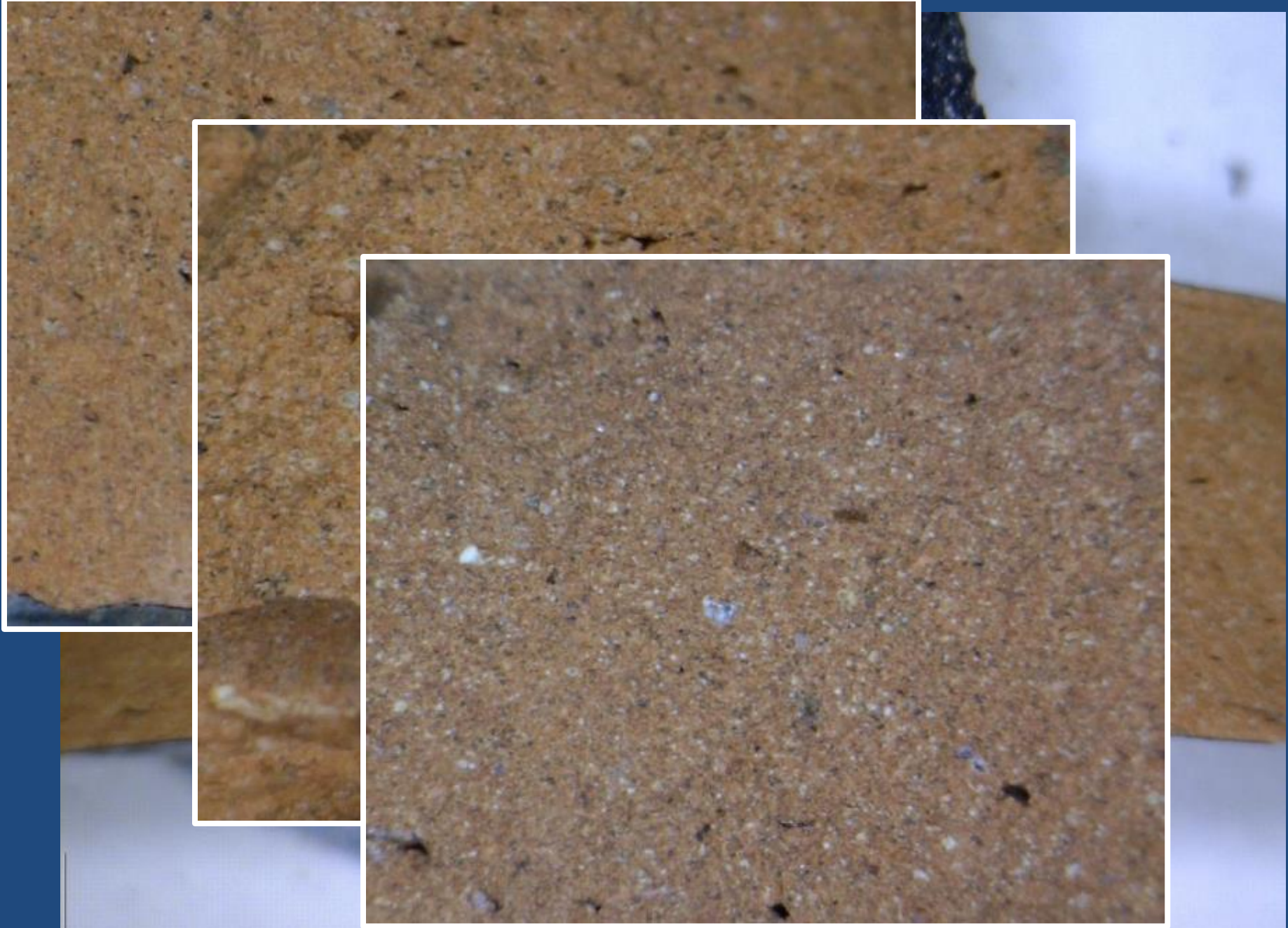
BAY OF NAPLES

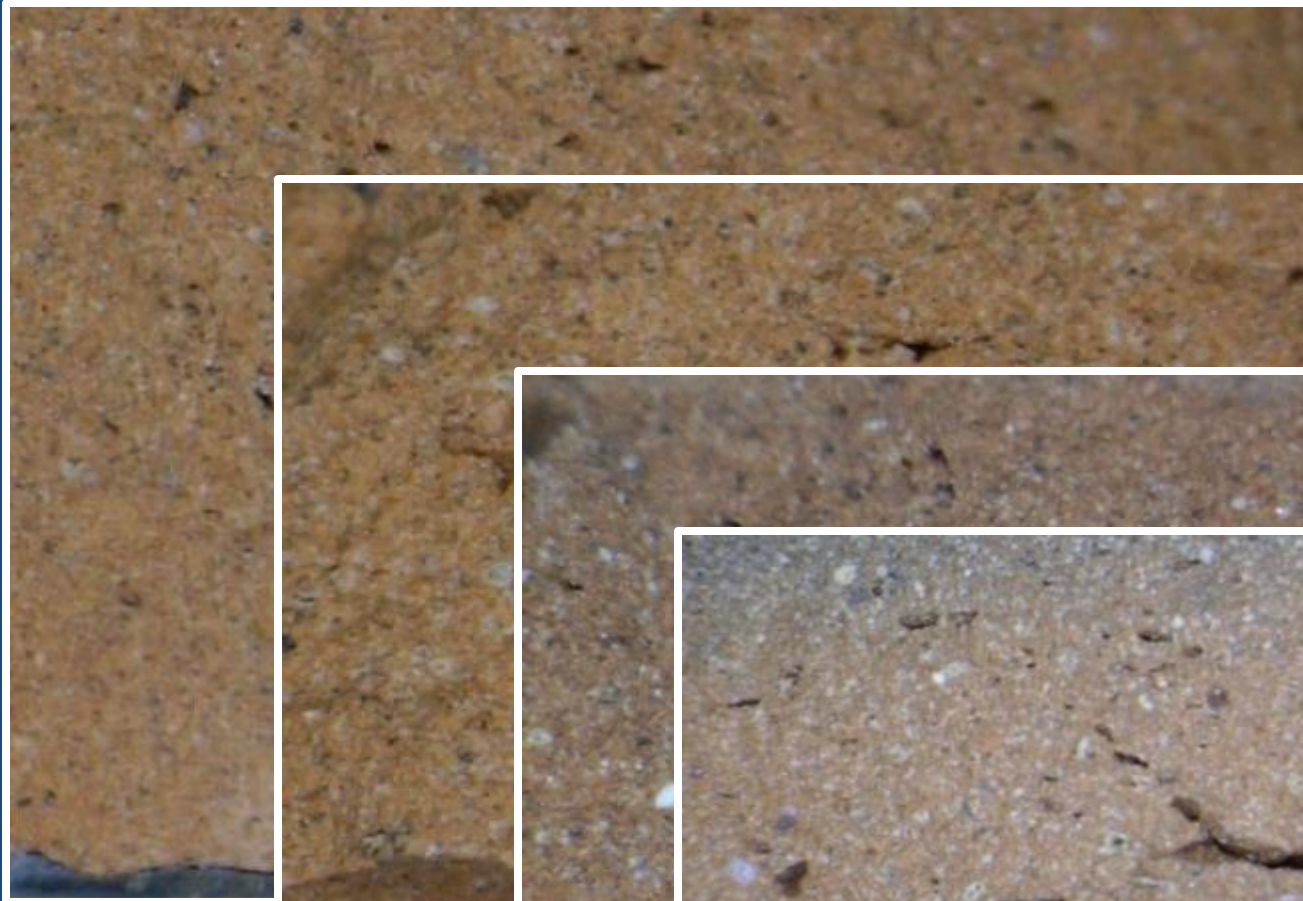
**(ISCHIA MARINE CLAY WITH
VOLCANIC COMPONENT?)**

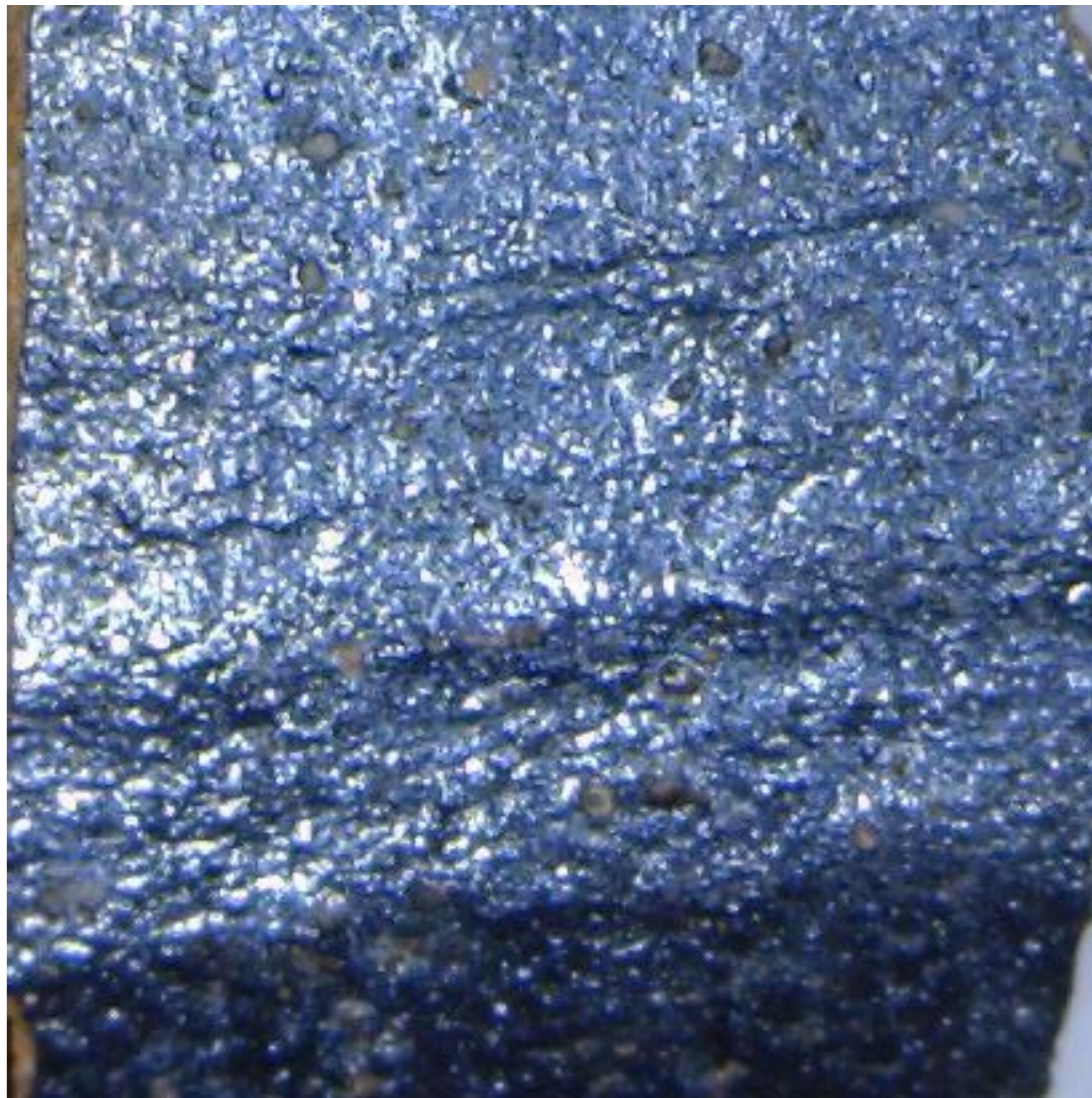












CAMPANA B-01D

**NORTHERN CAMPANIA ? (CALES?)
(MARINE CLAY)**







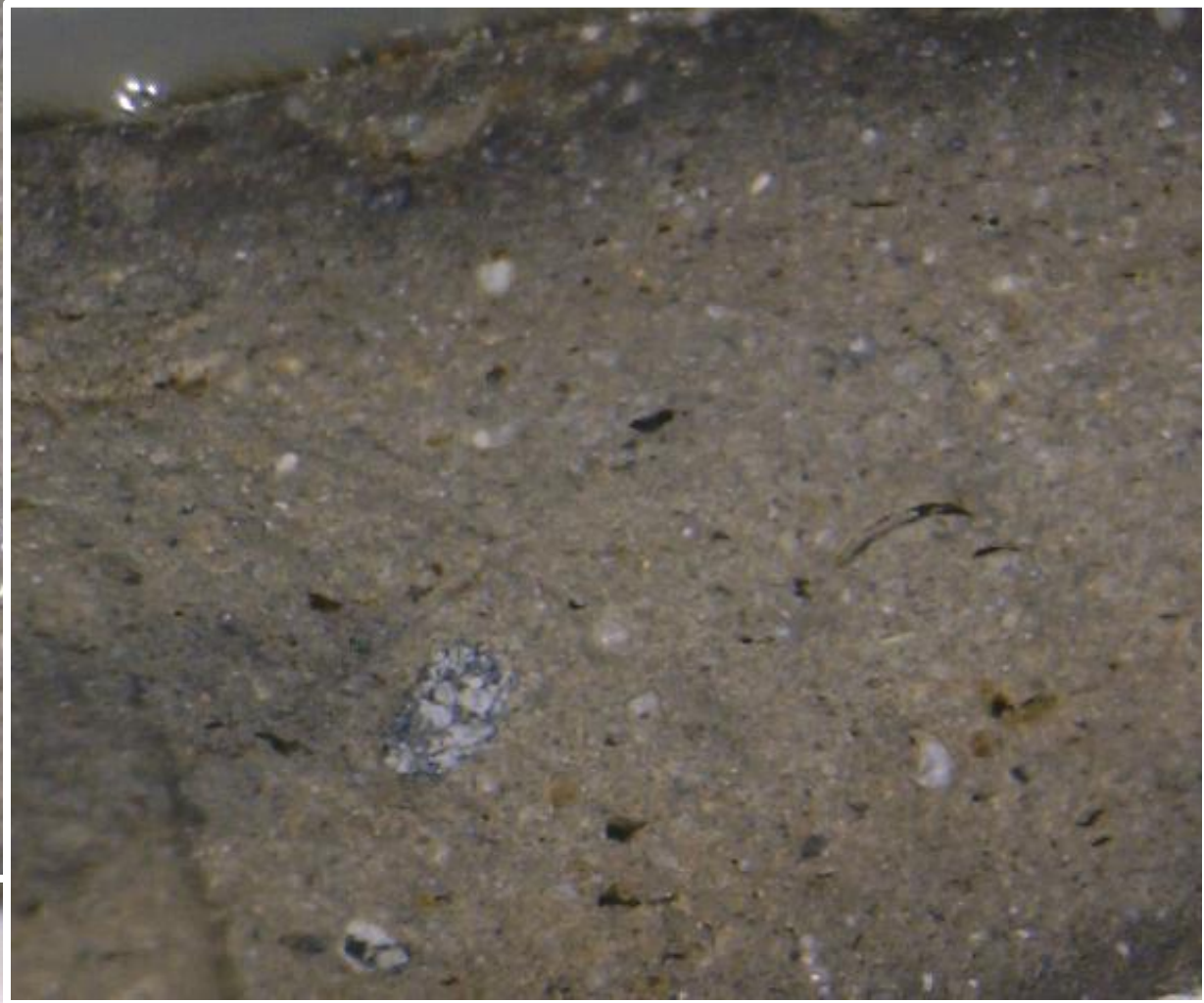
CAMPANA C

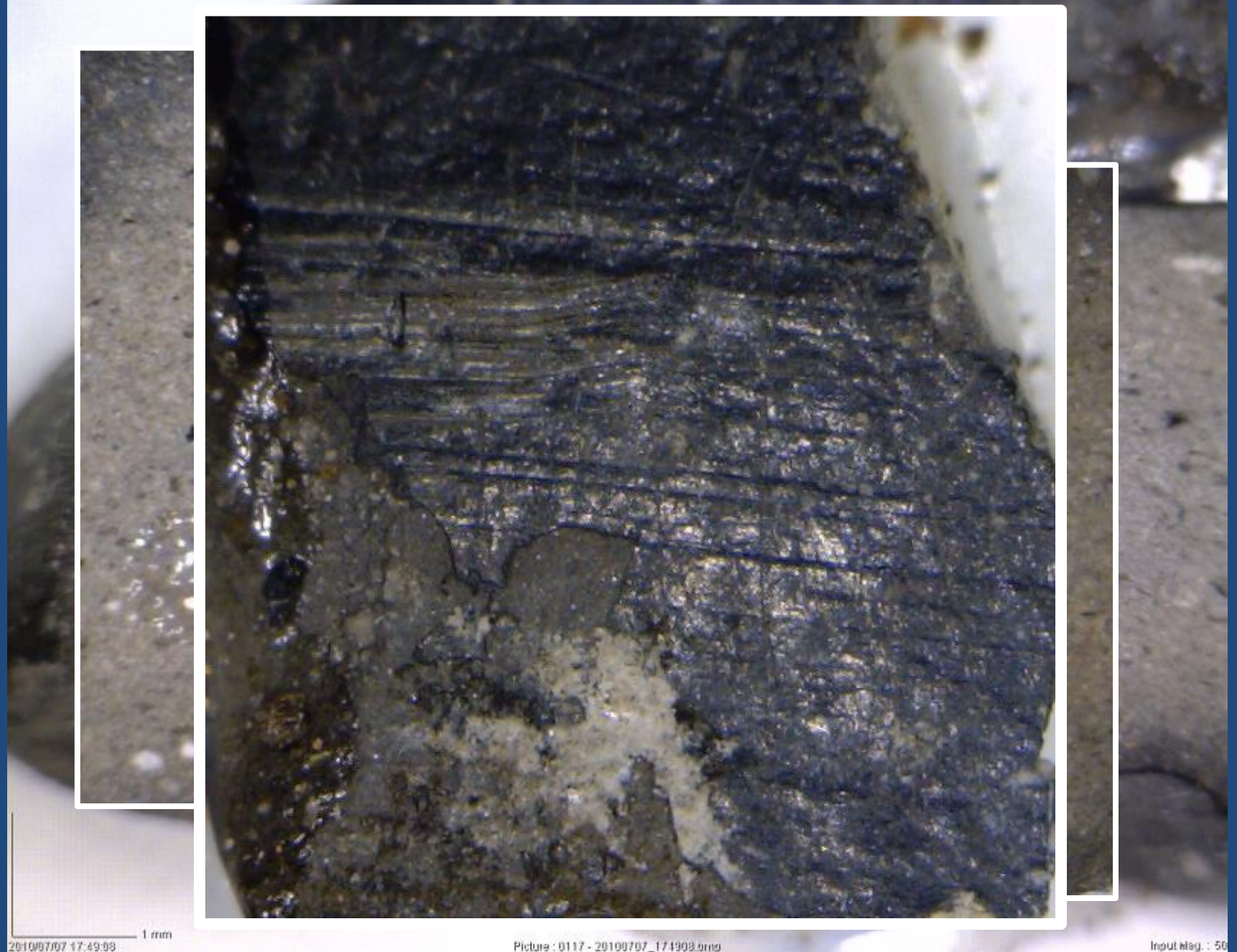
EASTERN SICILY





1 cm





EASTERN SIGILLATA A

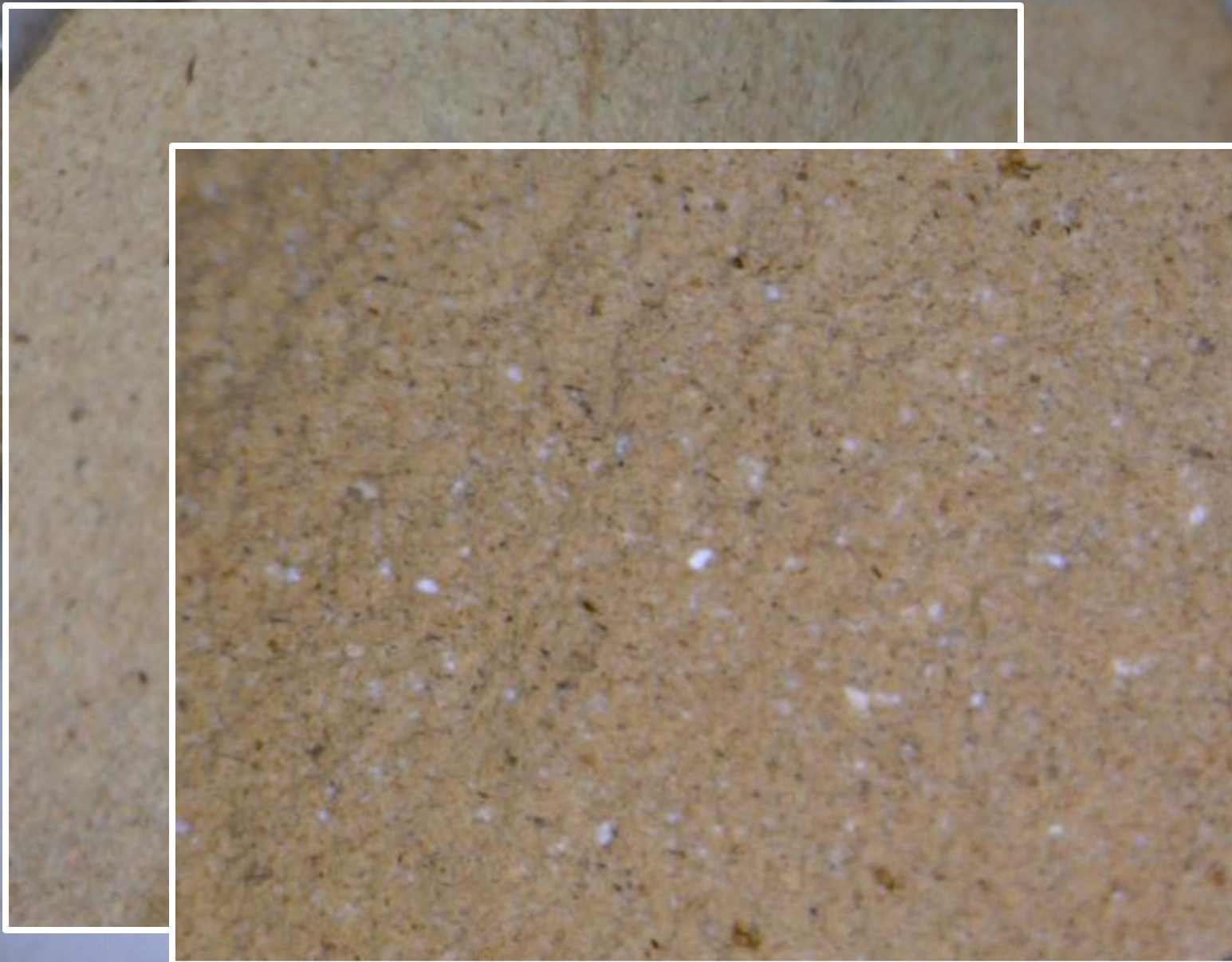
NORTHERN COASTAL SYRIA

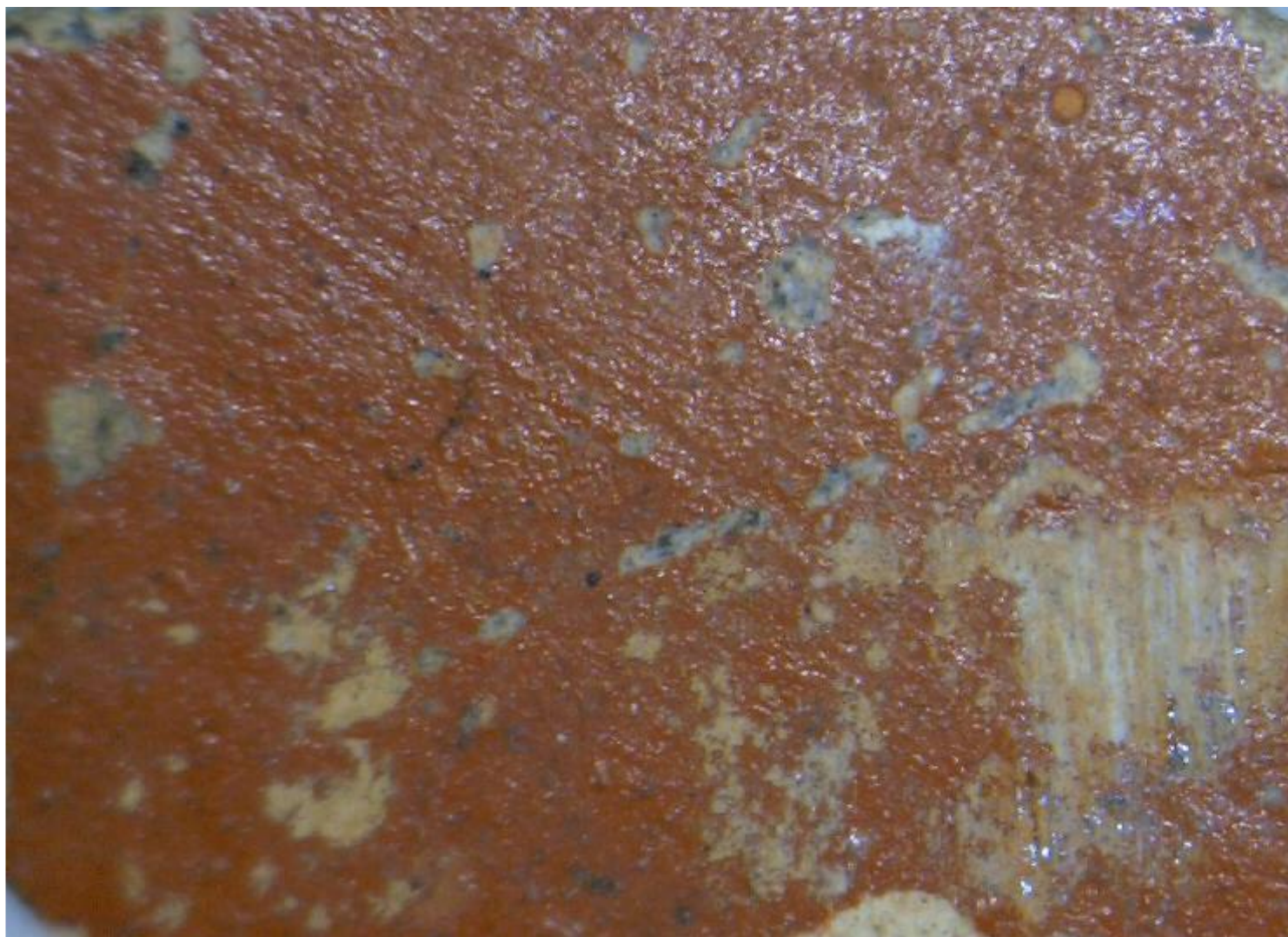


1 mm



1 mm





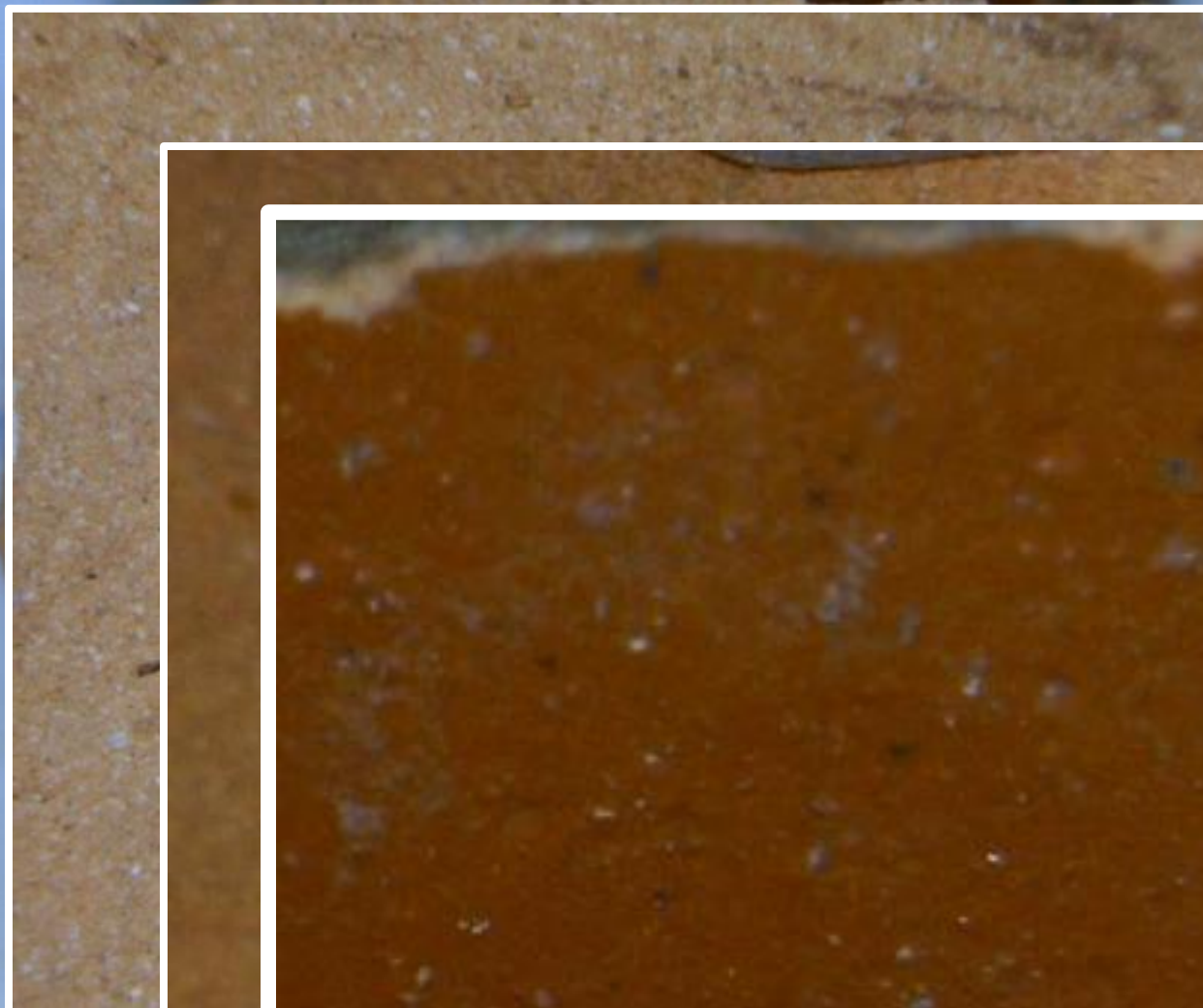
ITALIAN SIGILLATA

AREZZO, PISA, POZZUOLI?









CAMPANIAN RED-SLIP WARE (AKA “TRIPOLITANIAN SIGILLATA”)

**BAY OF NAPLES
(ISCHIA MARINE CLAY WITH A
VOLCANIC COMPONENT?)**







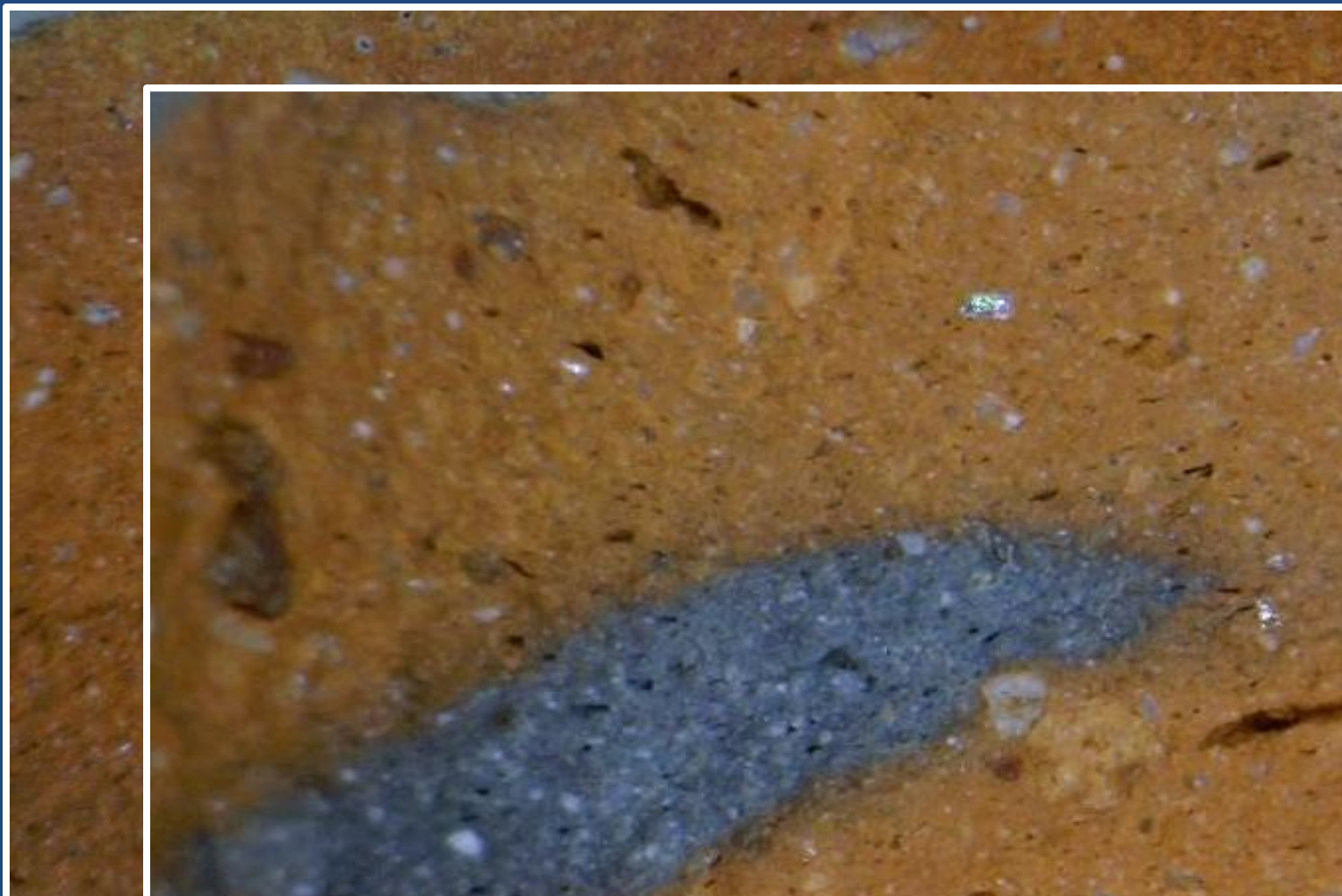


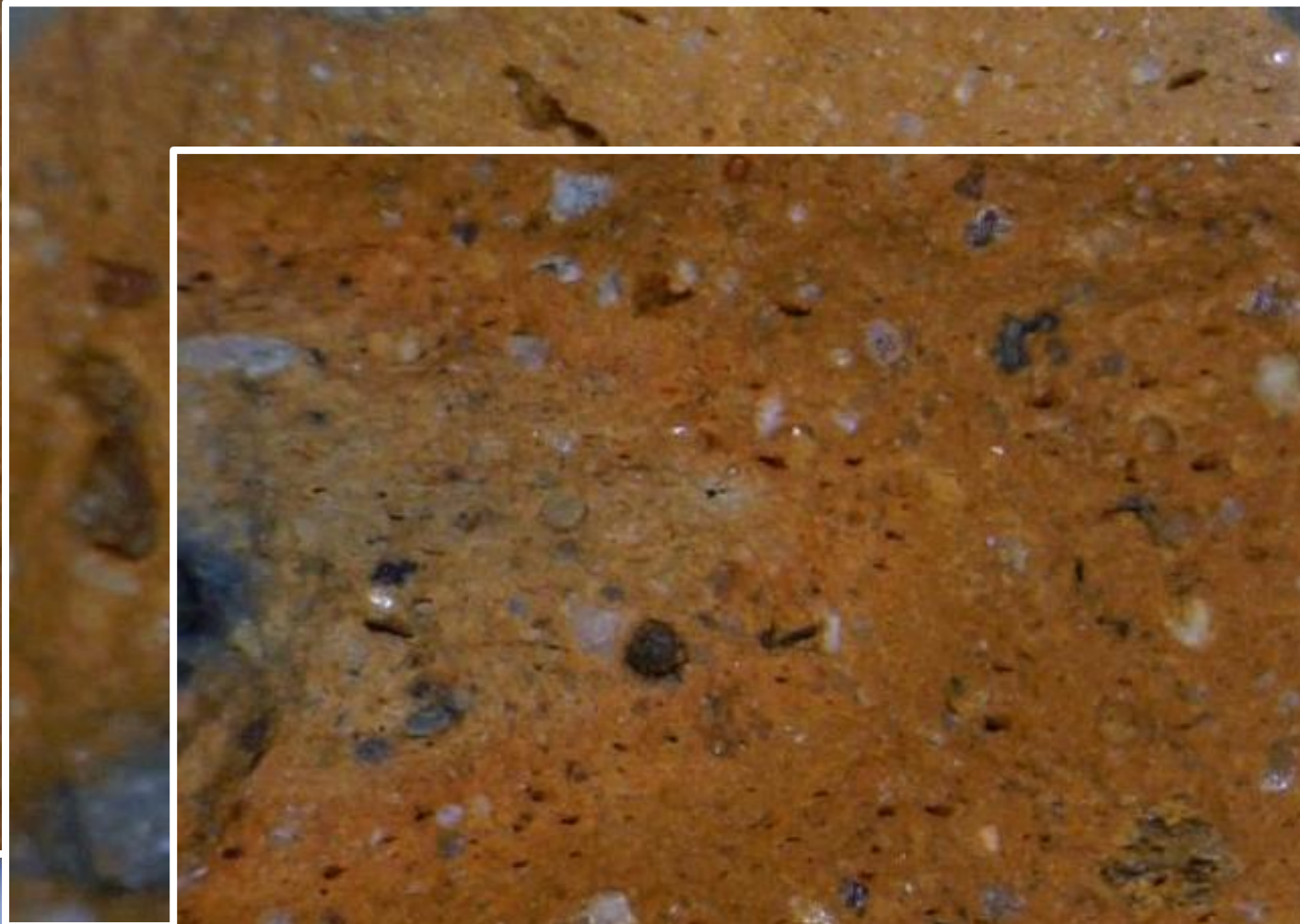
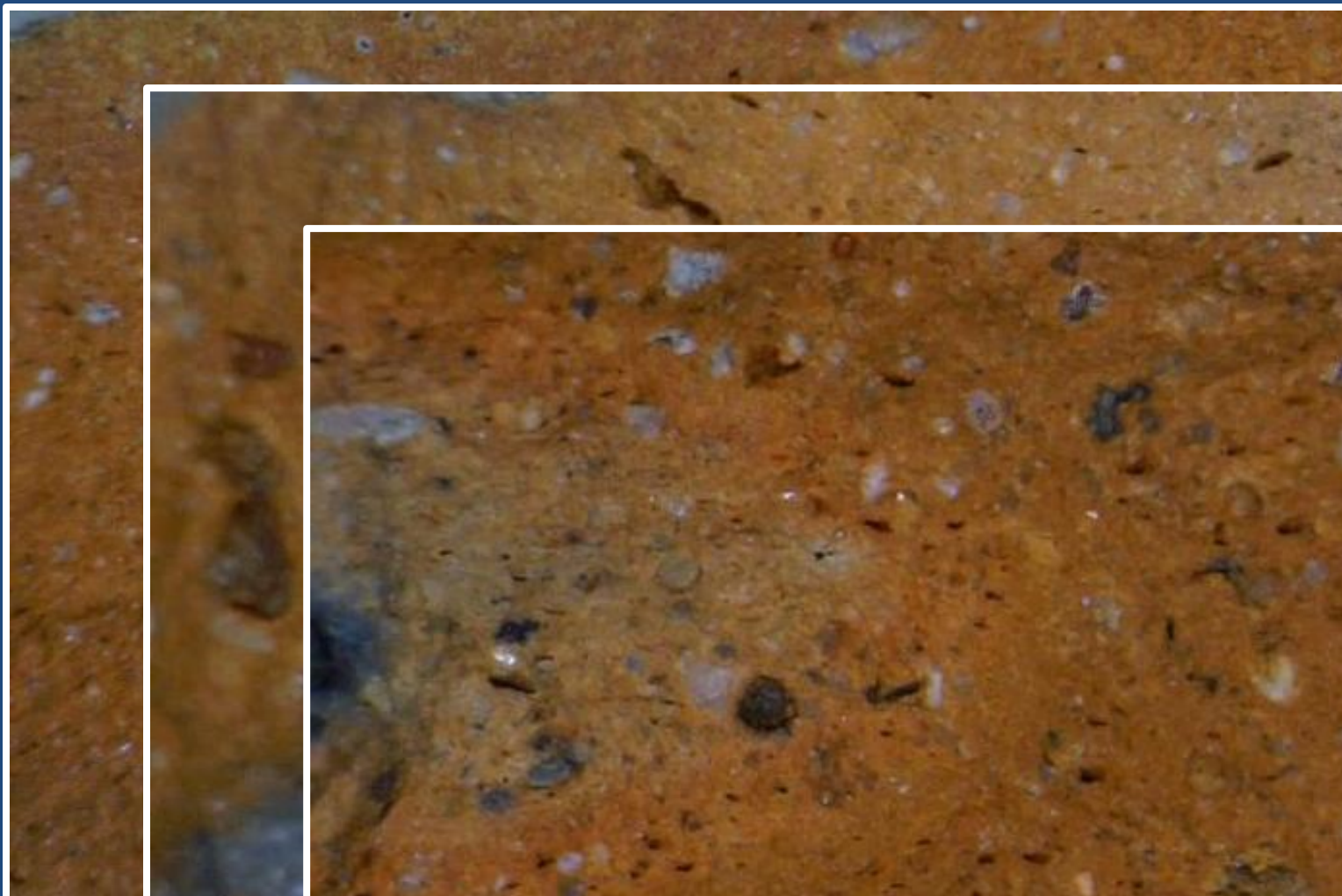
THIN-WALLED WARE 1

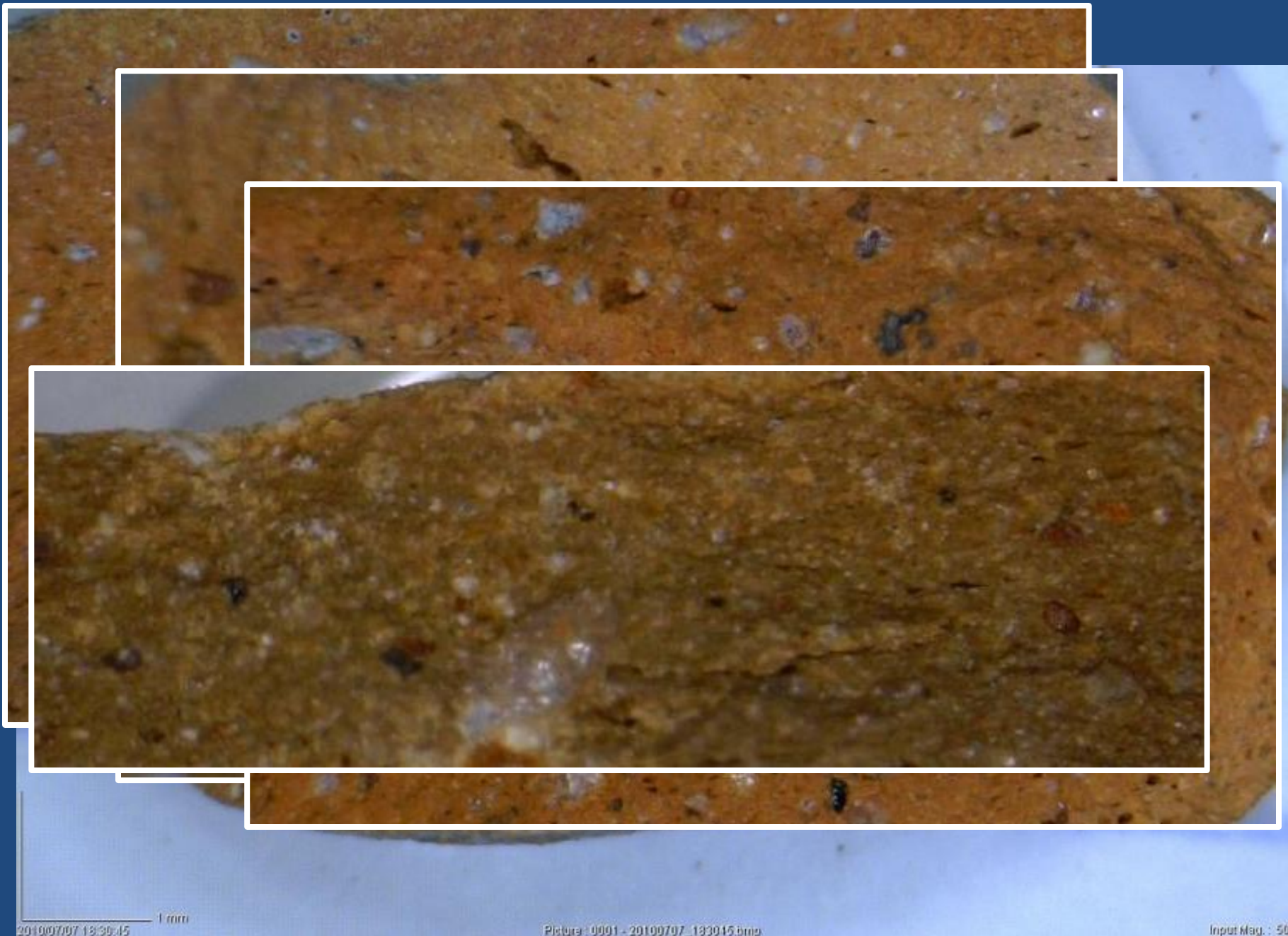
GRITTY FERRUGENOUS MATRIX WITH SPARSE
MEDIUM VOLCANIC AND CARBONATE
MACROGRAINS (INCLUDING SHELL)
(BAY OF NAPLES?)

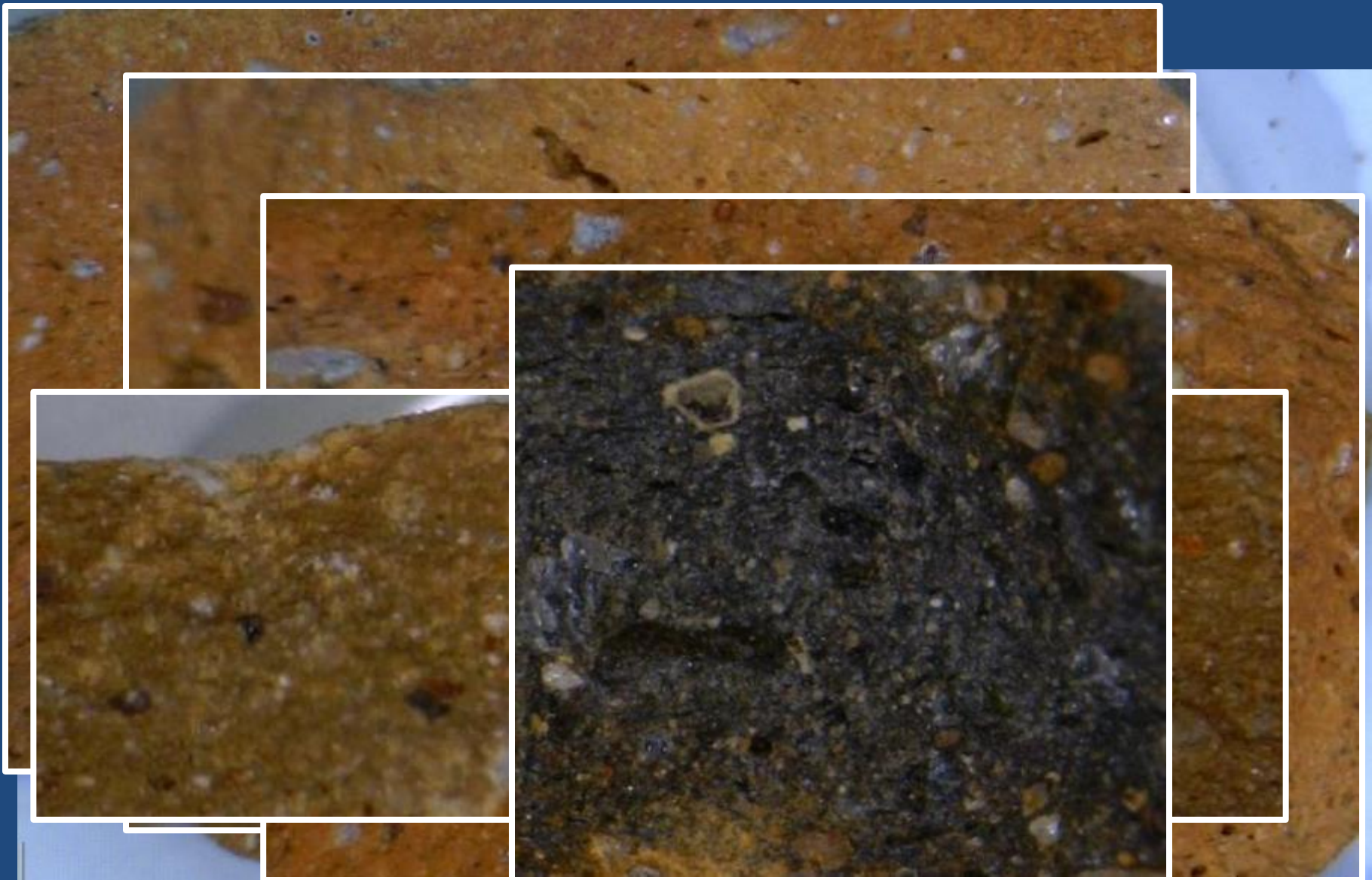










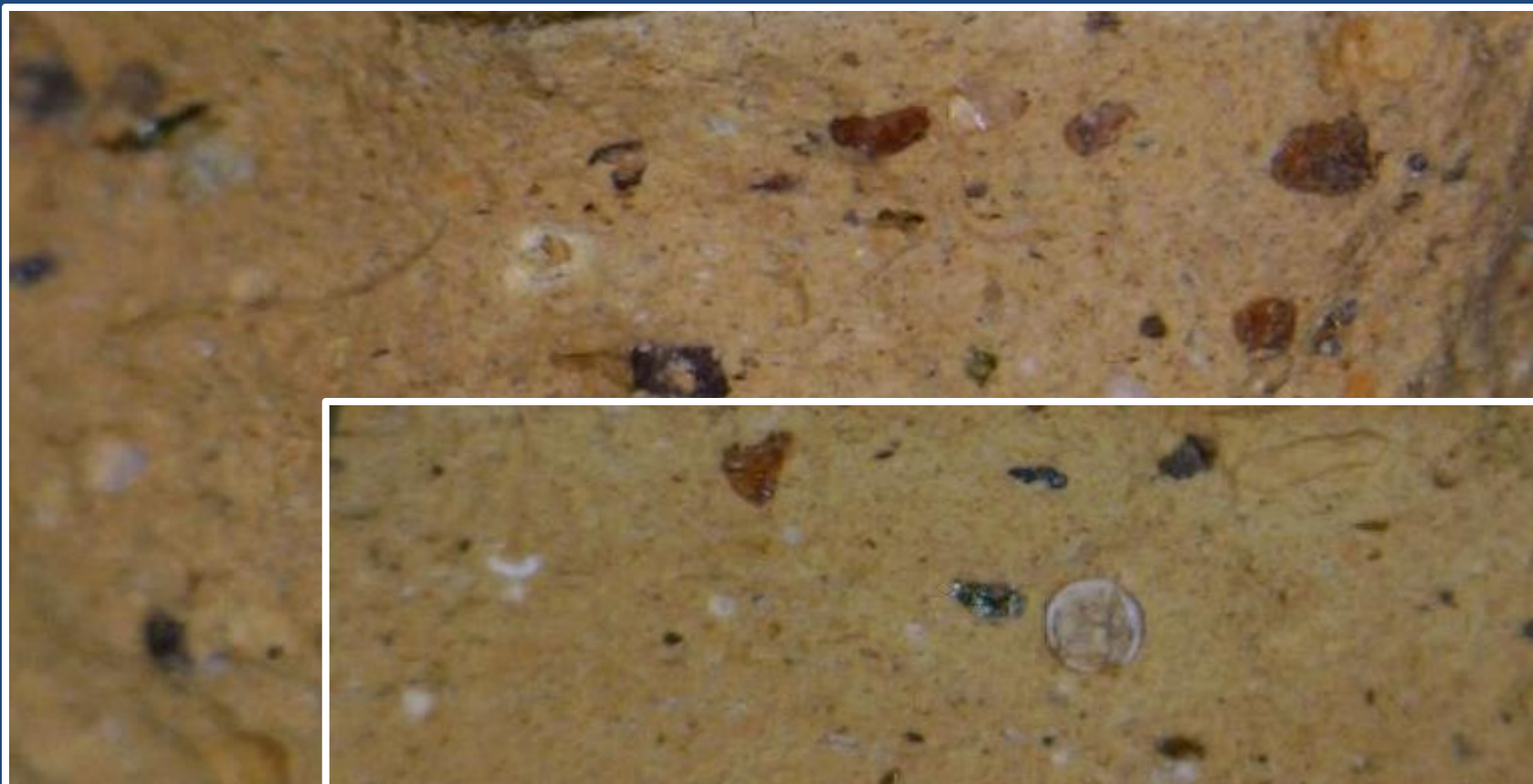


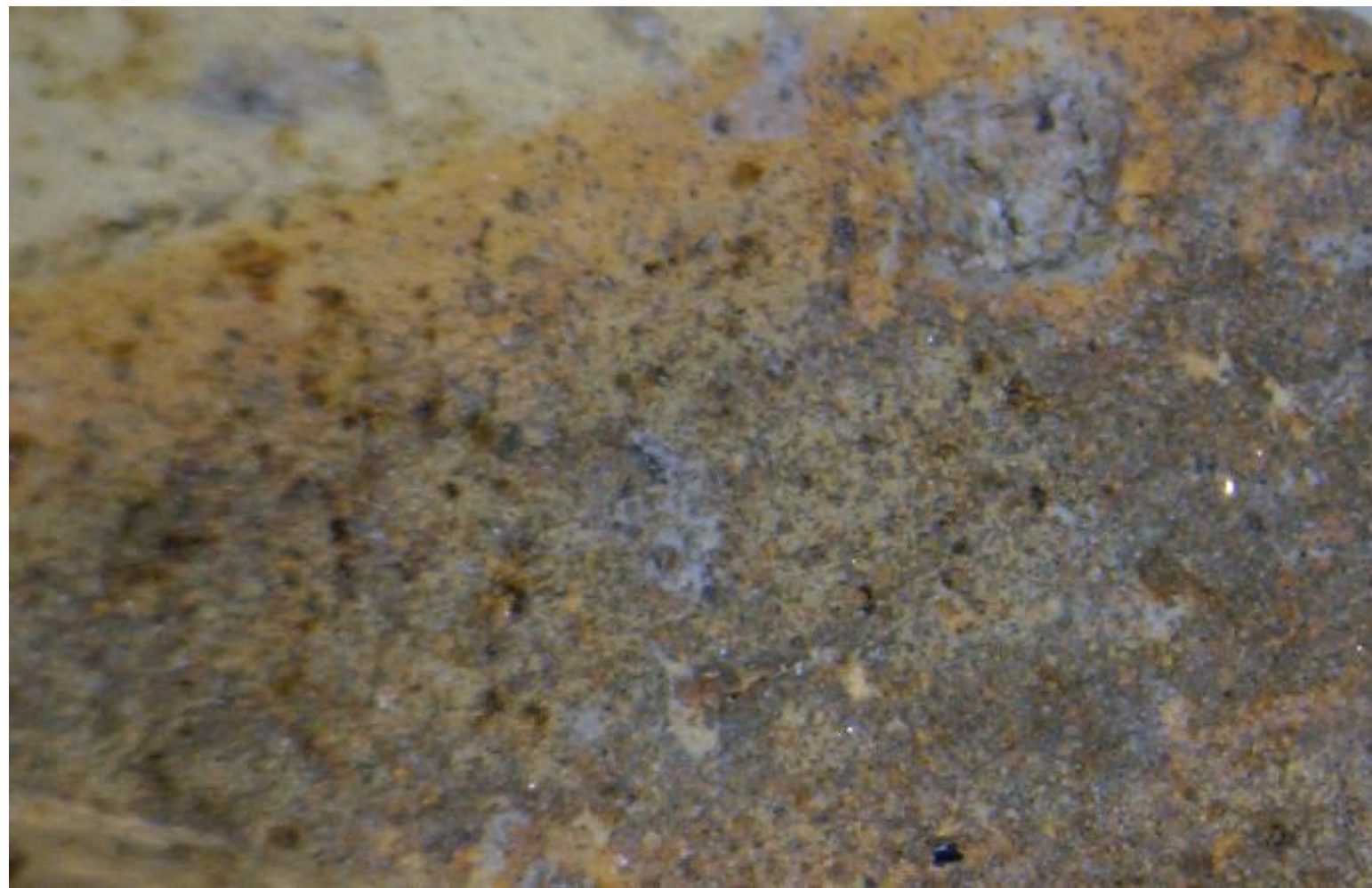
THIN-WALLED WARE 2

FINE NON-FERRUGENOUS MATRIX WITH
SPARSE TO FREQUENT, MEDIUM VOLCANIC
AND CARBONATE (INCLUDING SHELL)
MACROGRAINS
(BAY OF NAPLES? [SORRENTO AREA?])







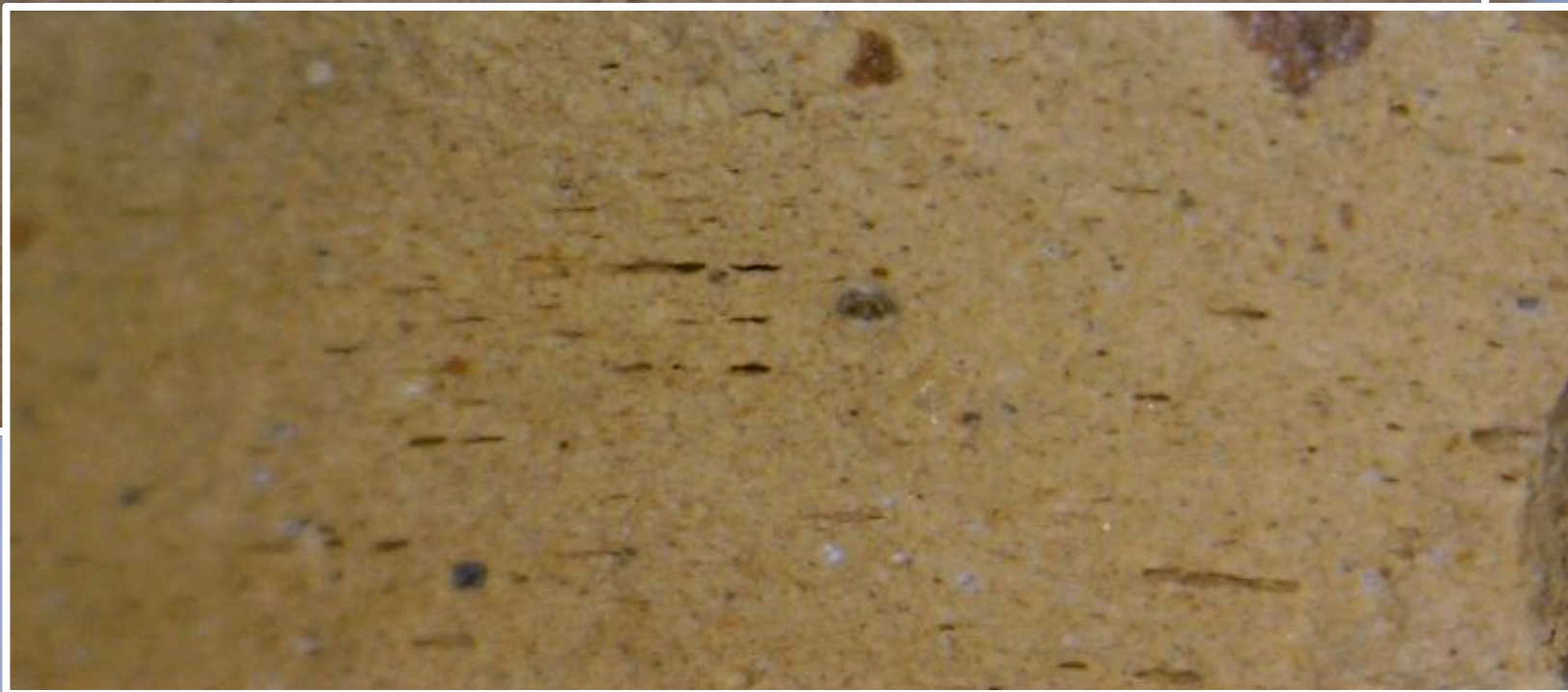


FINWARE 1

**FINE NON-FERRUGENOUS MATRIX
FREE OF MACROGRAINS**



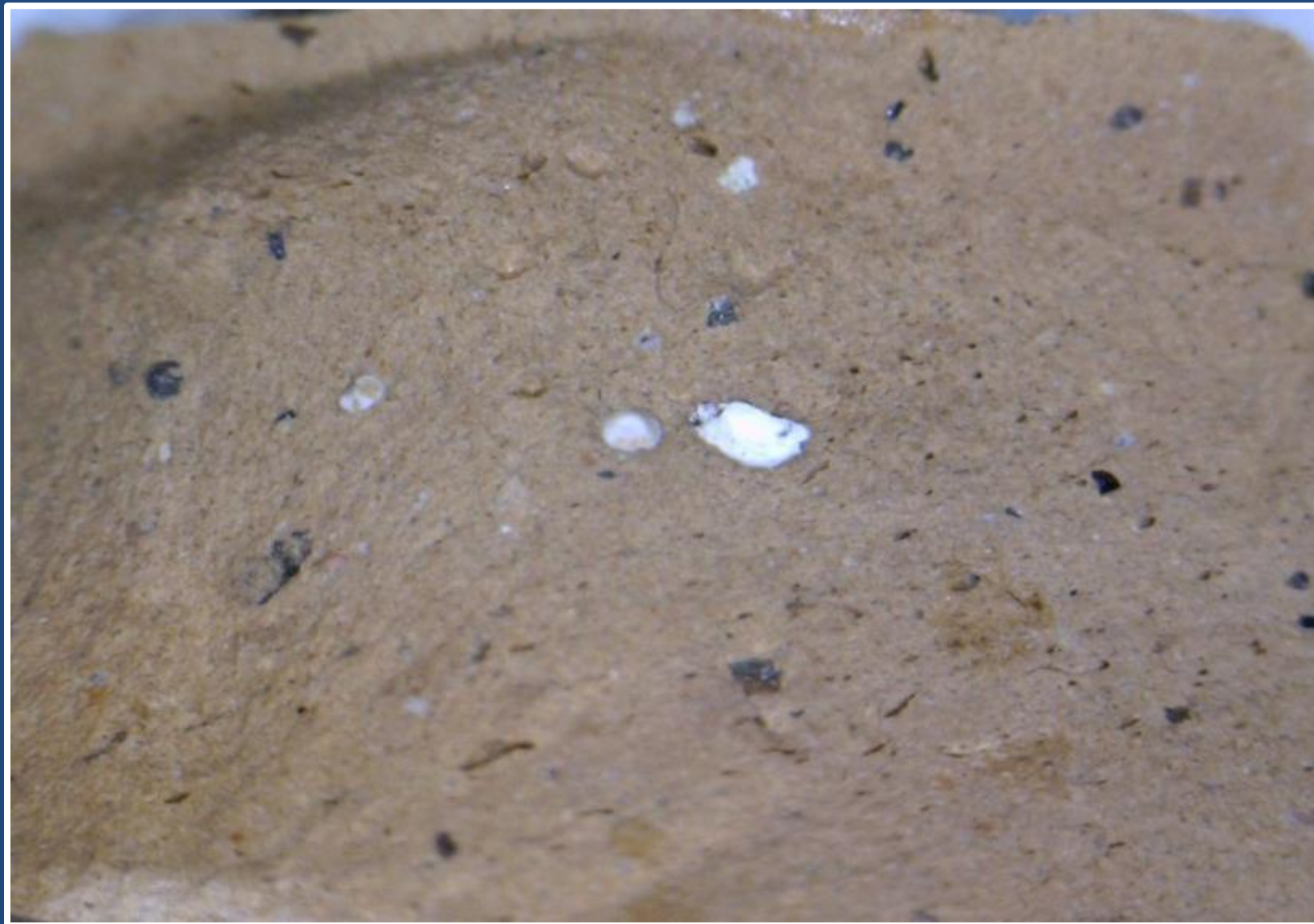




FINWARE 2

**FINE NON-FERRUGENOUS MATRIX
WITH SPARSE SMALL TO LARGE
VOLCANIC AND CARBONATE
MACROGRAINS**

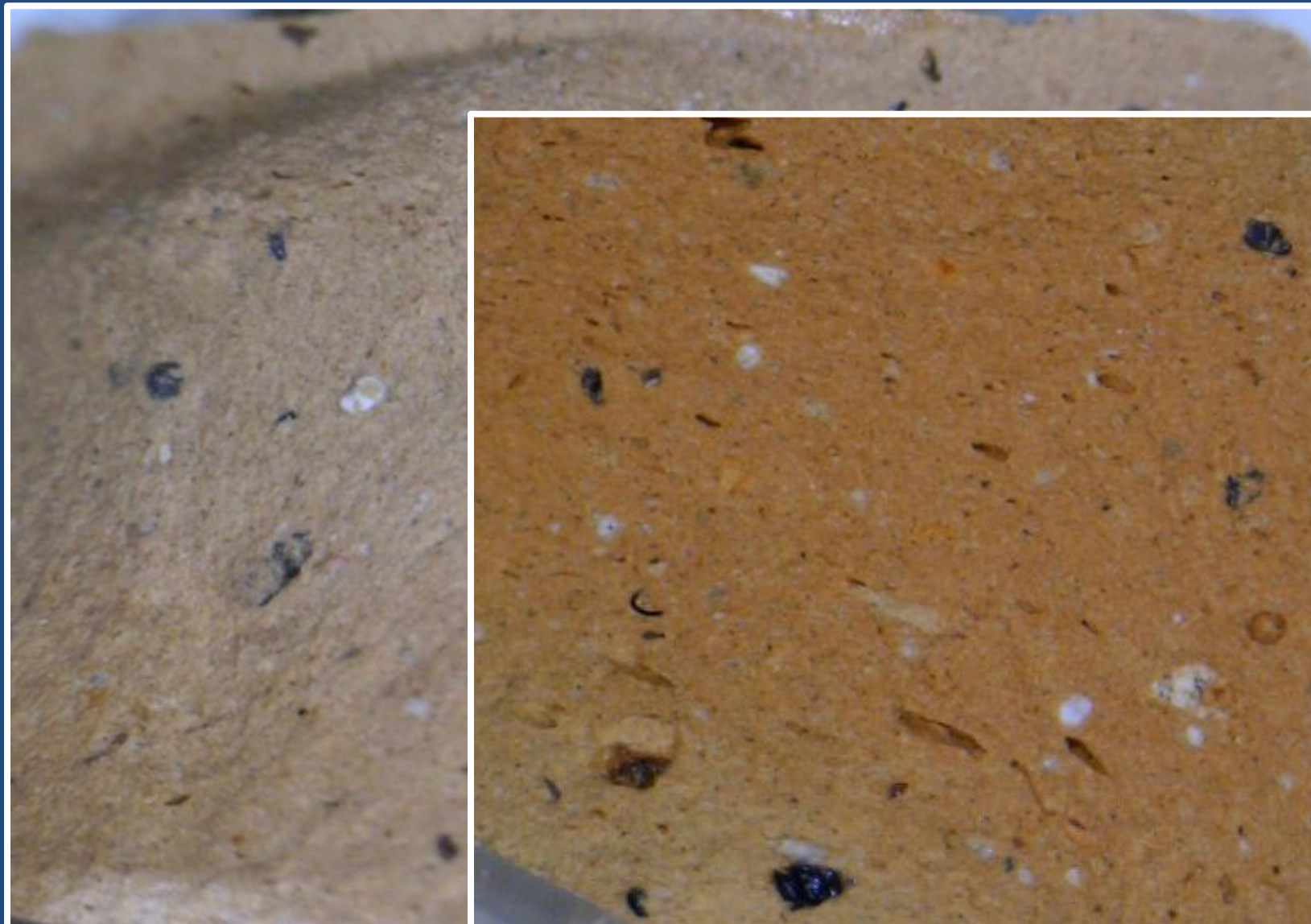




20100707 13:51:24

Picture 10159 - 20100707_135123.bmp

Input Map : 50



1 mm
20100707 13:51:24

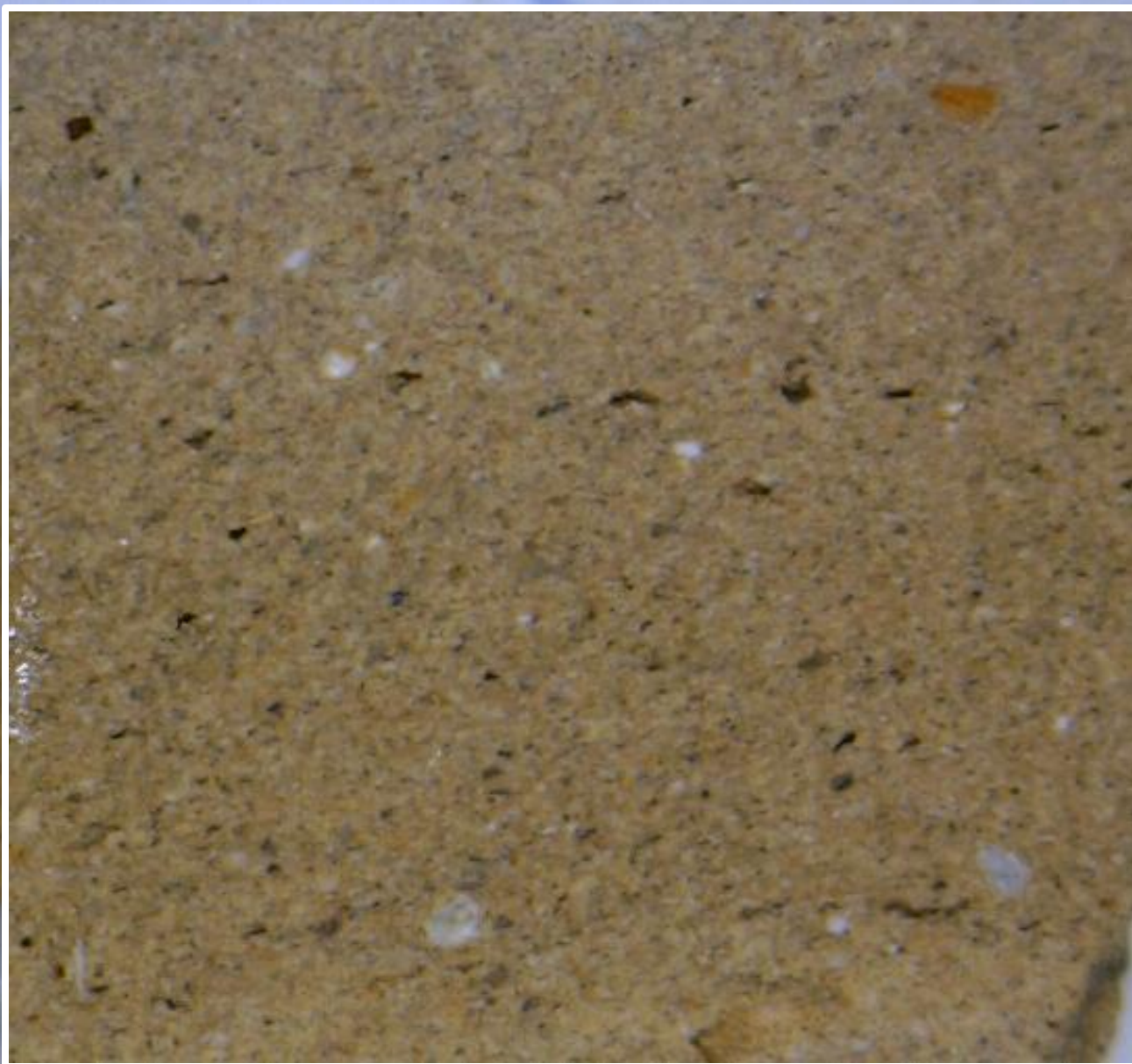
Pictre 10159 - 20100707_135123.bmp

Input Mac : 50

FINWARE 3

**GRITTY NON-FERRUGENOUS MATRIX
WITH SPARSE SMALL VOLCANIC AND
CARBONATE MACROGRAINS**





1 mm

COARSEWARE 1

**FINE NON-FERRUGENOUS MATRIX
WITH COARSE VOLCANIC
MACROGRAINS**



COMPENRE1289-5015



1 mm
2019/07/07 19:23:04

0011-20190707_192304.bmp

Input Mag.: 50

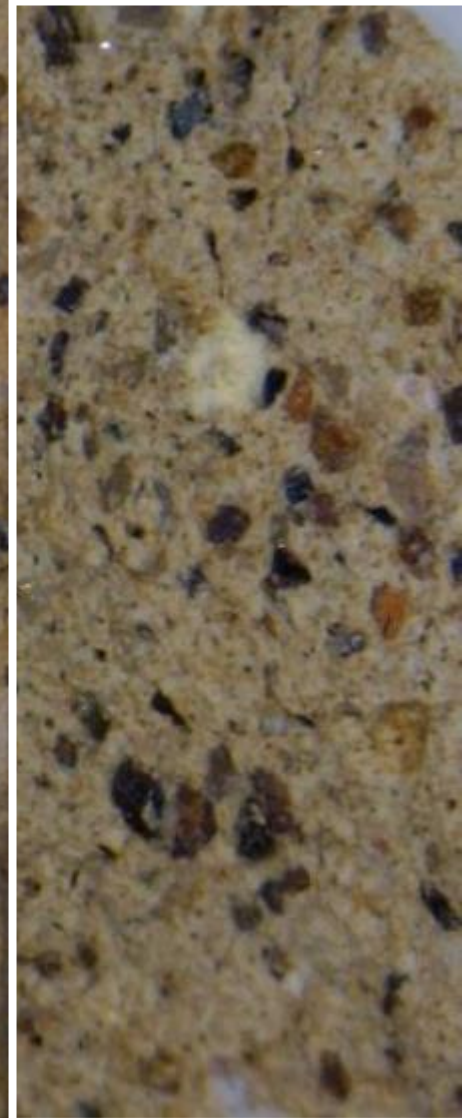
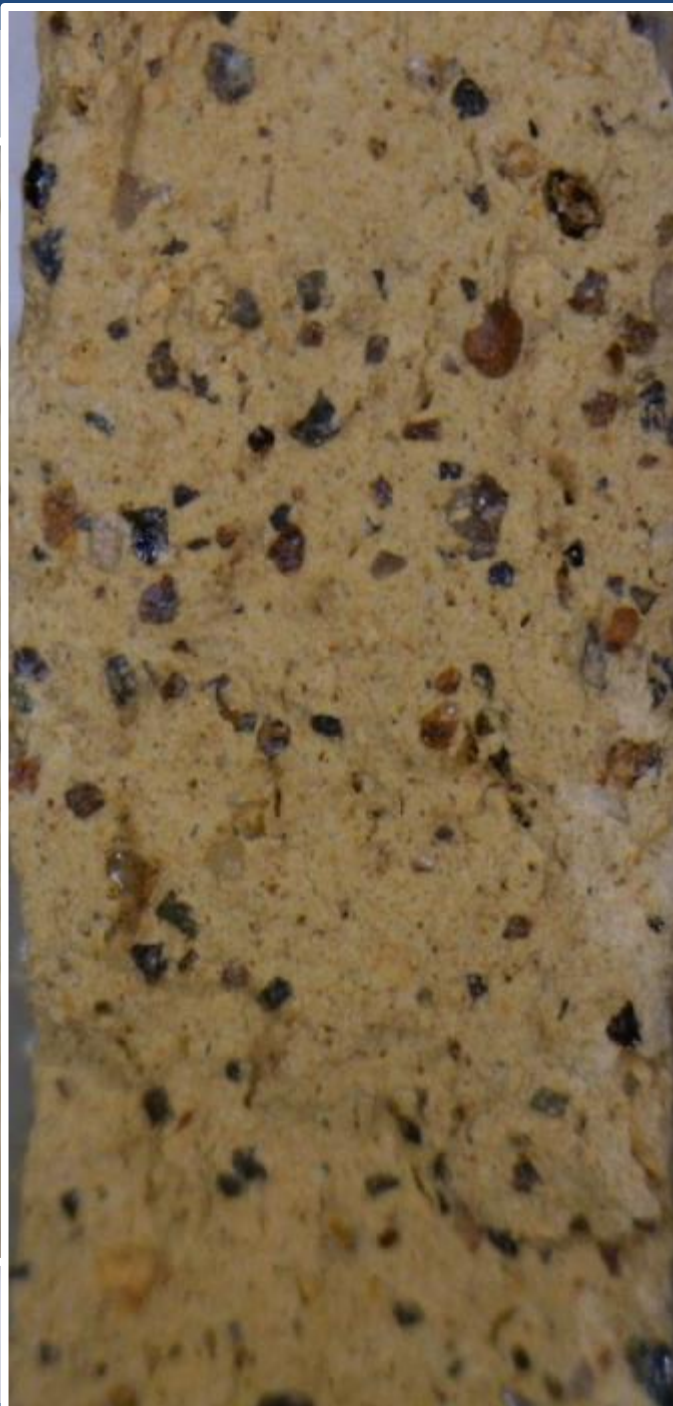
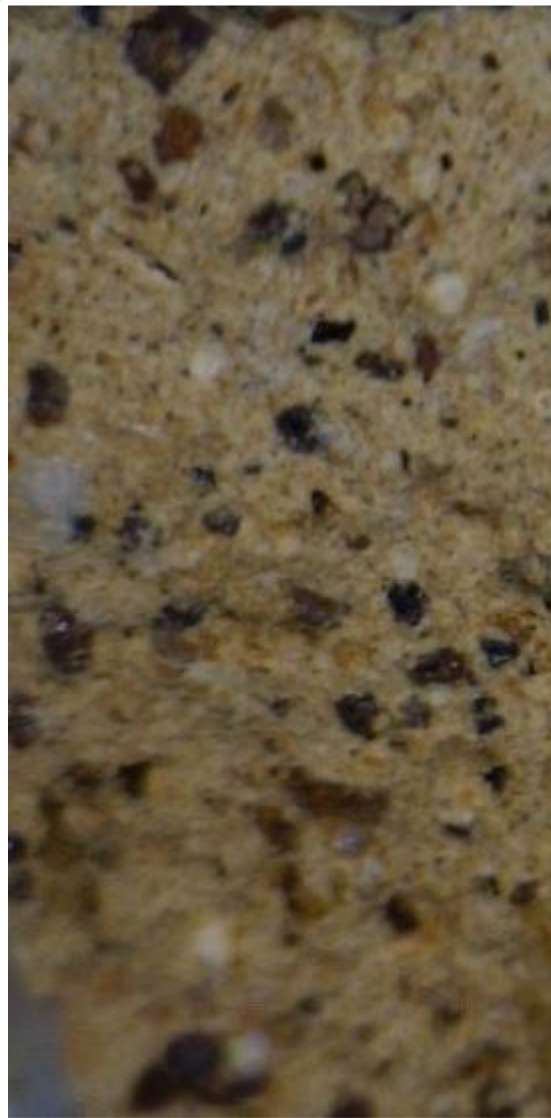


COARSEWARE 2

**FINE NON FERRUGENOUS MATRIX
WITH FINE TO MEDIUM VOLCANIC
MACROGRAINS (WITH PROMINENT
AUGITE)**





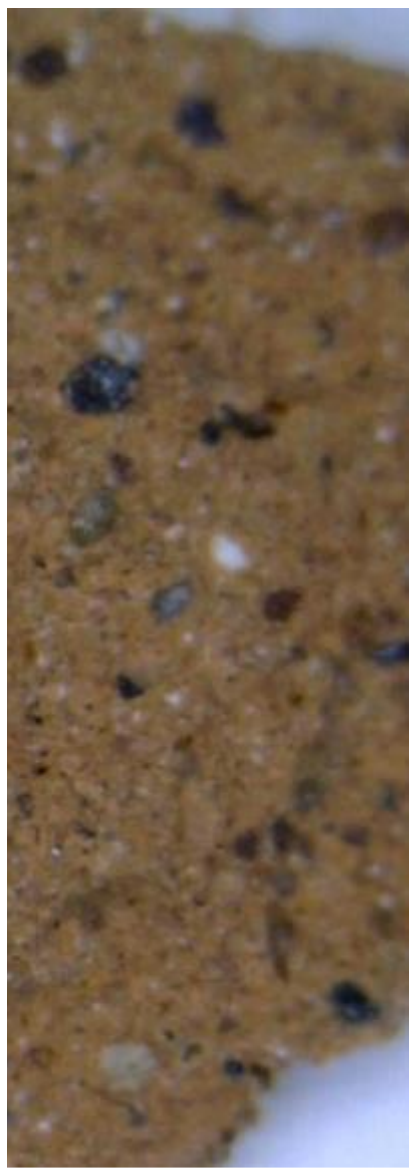
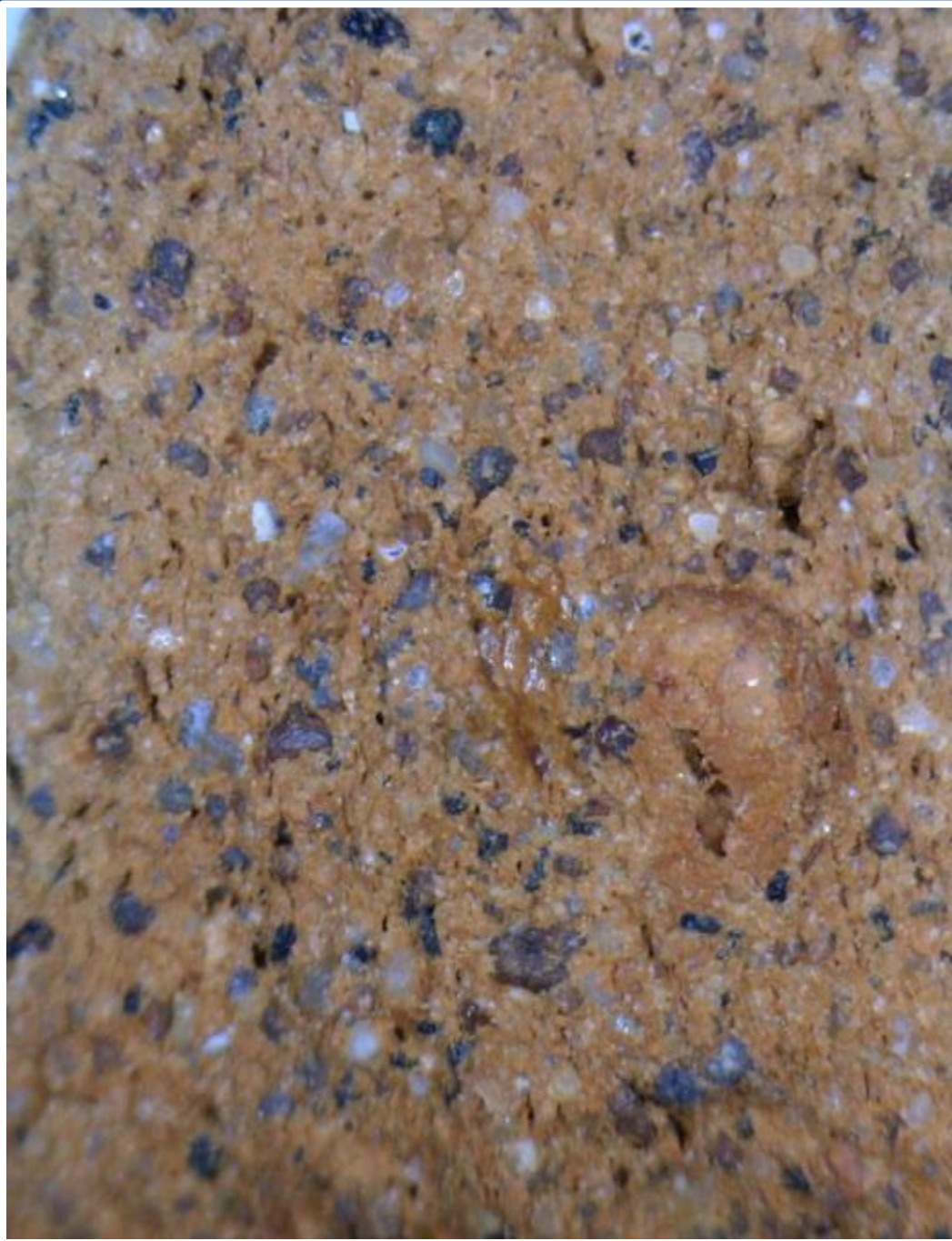
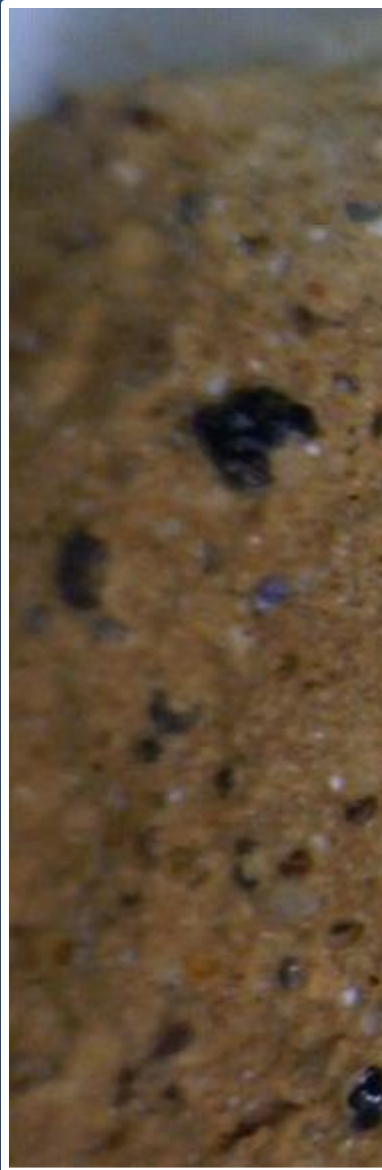


COARSEWARE 3

**GRITTY FERRUGENOUS MATRIX WITH
FINE TO MEDIUM VOLCANIC
MACROGRAINS (WITH PROMINENT
AUGITE)**







COARSEWARE 4

**FINE FERRUGENOUS MATRIX WITH
FINE TO COARSE VOLCANIC
MACROGRAINS**



1 mm

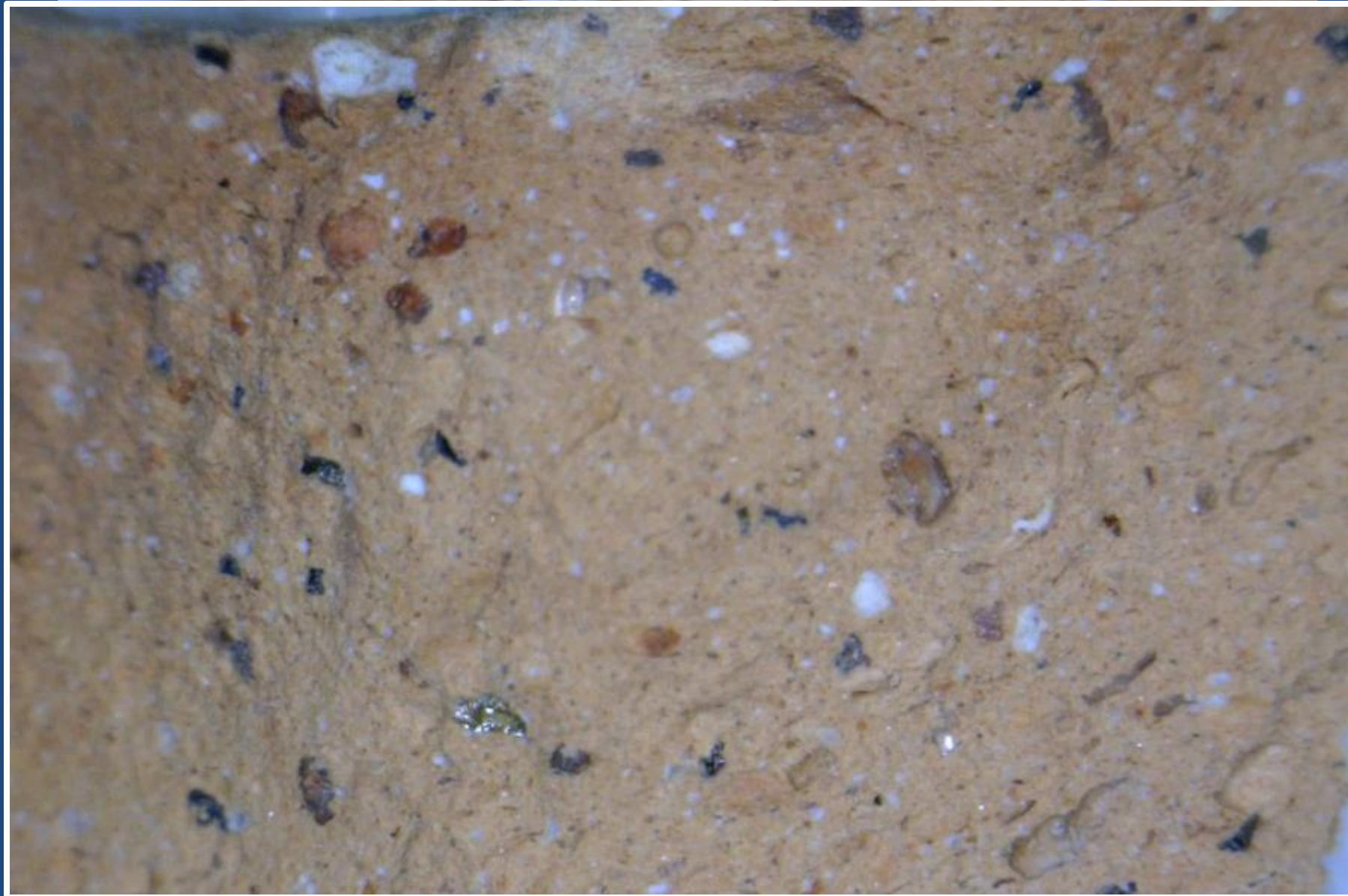




COARSEWARE 5

**FINE NON-FERRUGENOUS MATRIX
WITH FINE TO MEDIUM VOLCANIC
AND CARBONATE (INCLUDING SHELL)
MACROGRAINS**





COOKWARE 1

**FERRUGENOUS MATRIX WITH
SPARSE FINE TO COARSE VOLCANIC
MACROGRAINS**

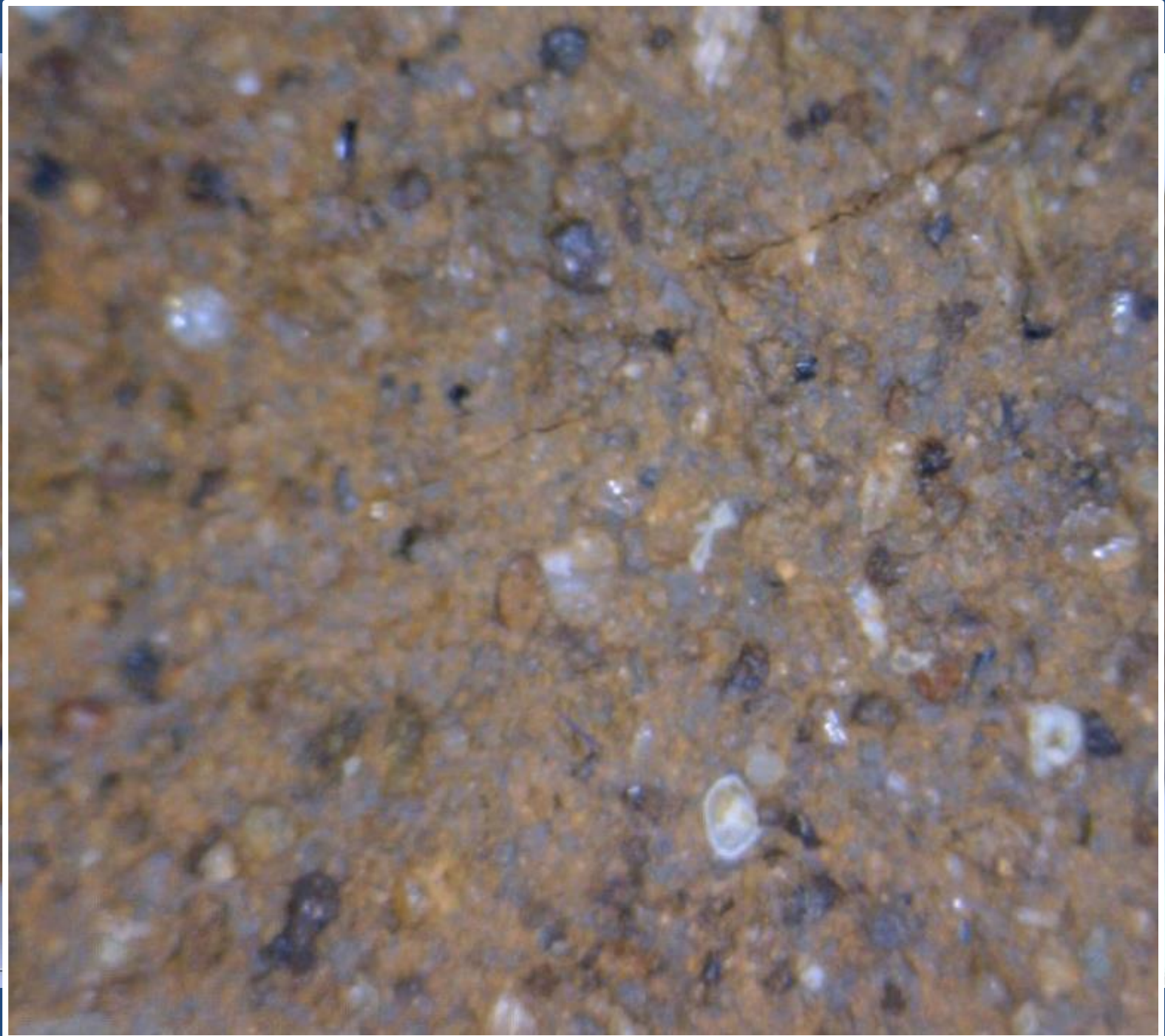


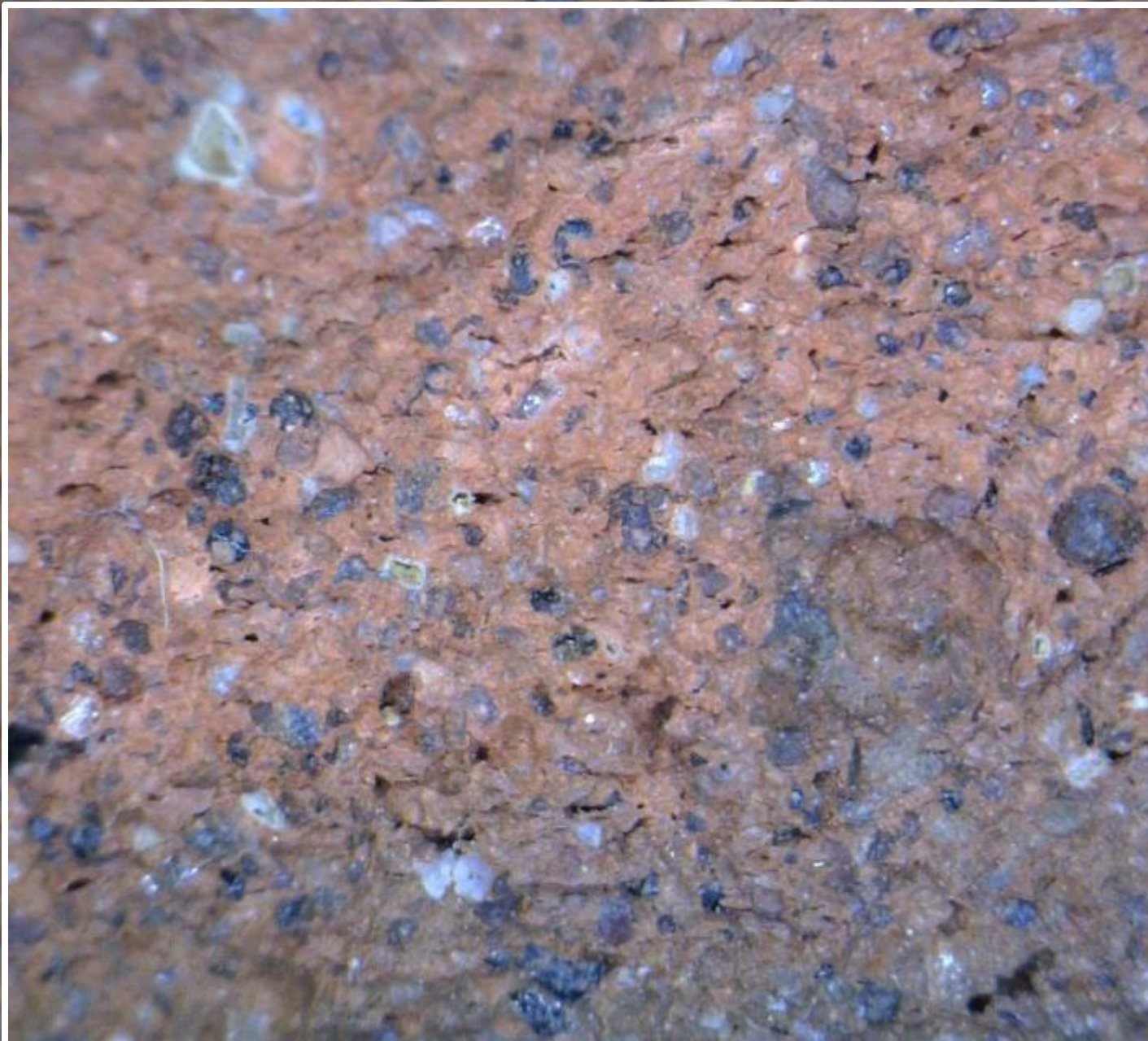


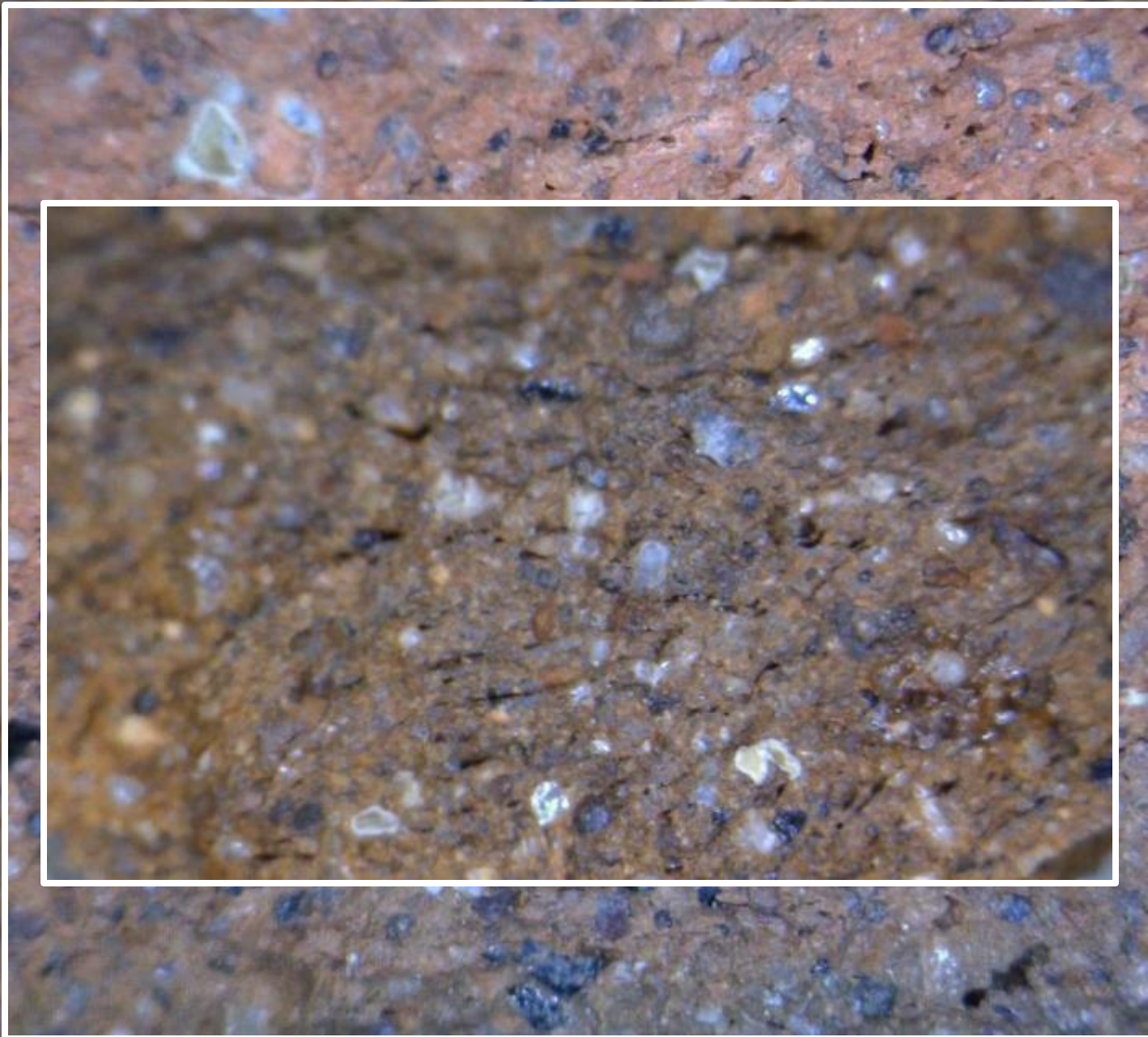
COOKWARE 2

**FERRUGENOUS MATRIX WITH VERY
ABUNDANT FINE TO MEDIUM
VOLCANIC AND CARBONATE
(INCLUDING SHELL) MACROGRAINS**



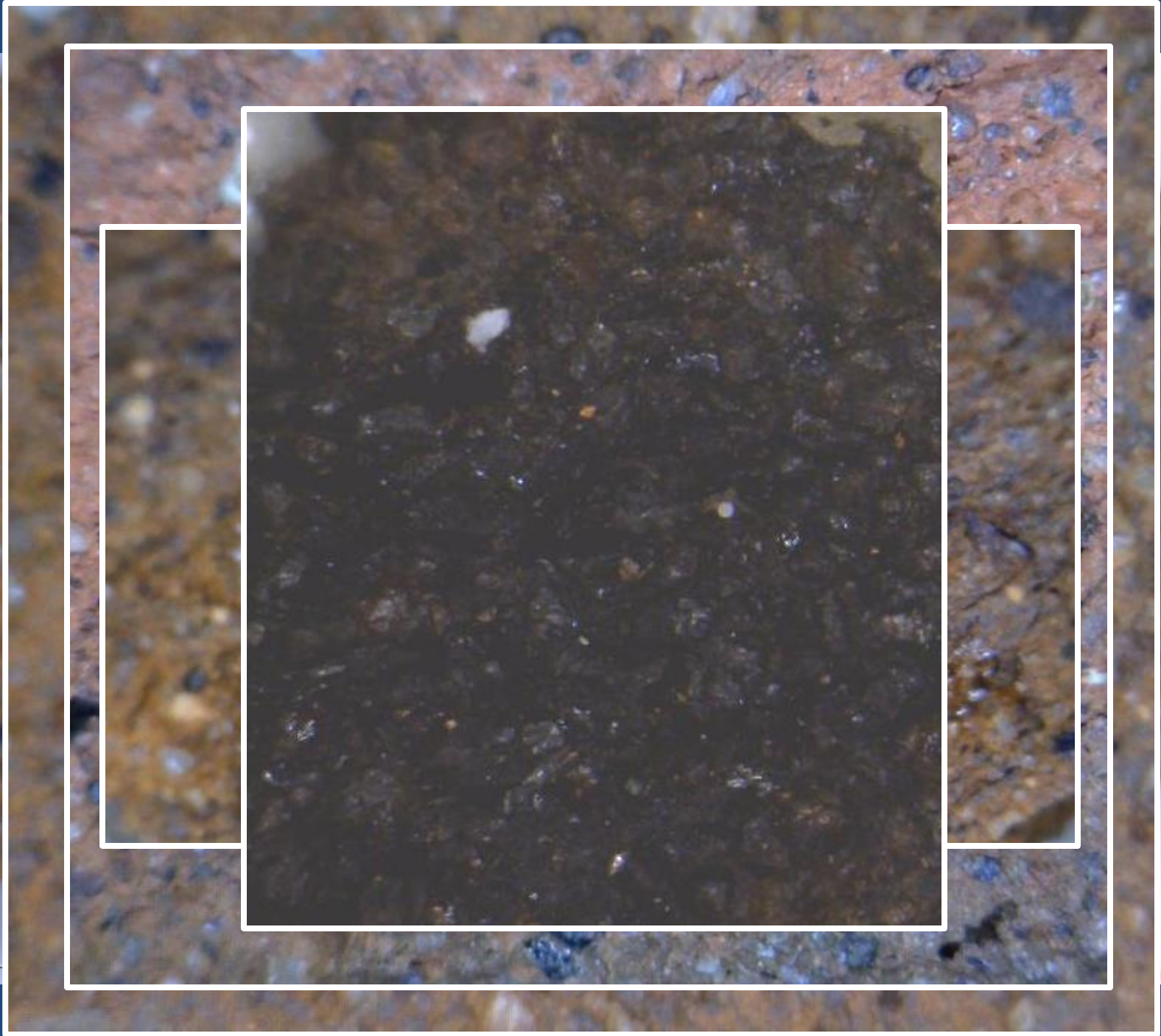








2010/07/07 19:49:15



pg. : 50

COOKWARE 3

**FERRUGENOUS MATRIX WITH SPARSE,
FINE TO MEDIUM VOLCANIC AND
QUARTZ (?) MACROGRAINS**



